



Epson SureColor® P7000 | P9000

Professional 24 & 44-Inch 10-Color Photographic Printers

Product Preview v1.0





Print Your Legacy.

As an artist, you have the unique ability to inspire change. You have the responsibility to remind us of our past, while making us excited for our future.

At Epson, we understand the importance of what you do.

That is why we strive to develop imaging technology that never highlights itself within your work. It's why we insist your work remain as beautiful as the day it was printed. And, it's the reason we push the limits of imaging technology to ensure your work is never limited by the technology used to print it.

Introducing the Epson SureColor P-Series Printers.



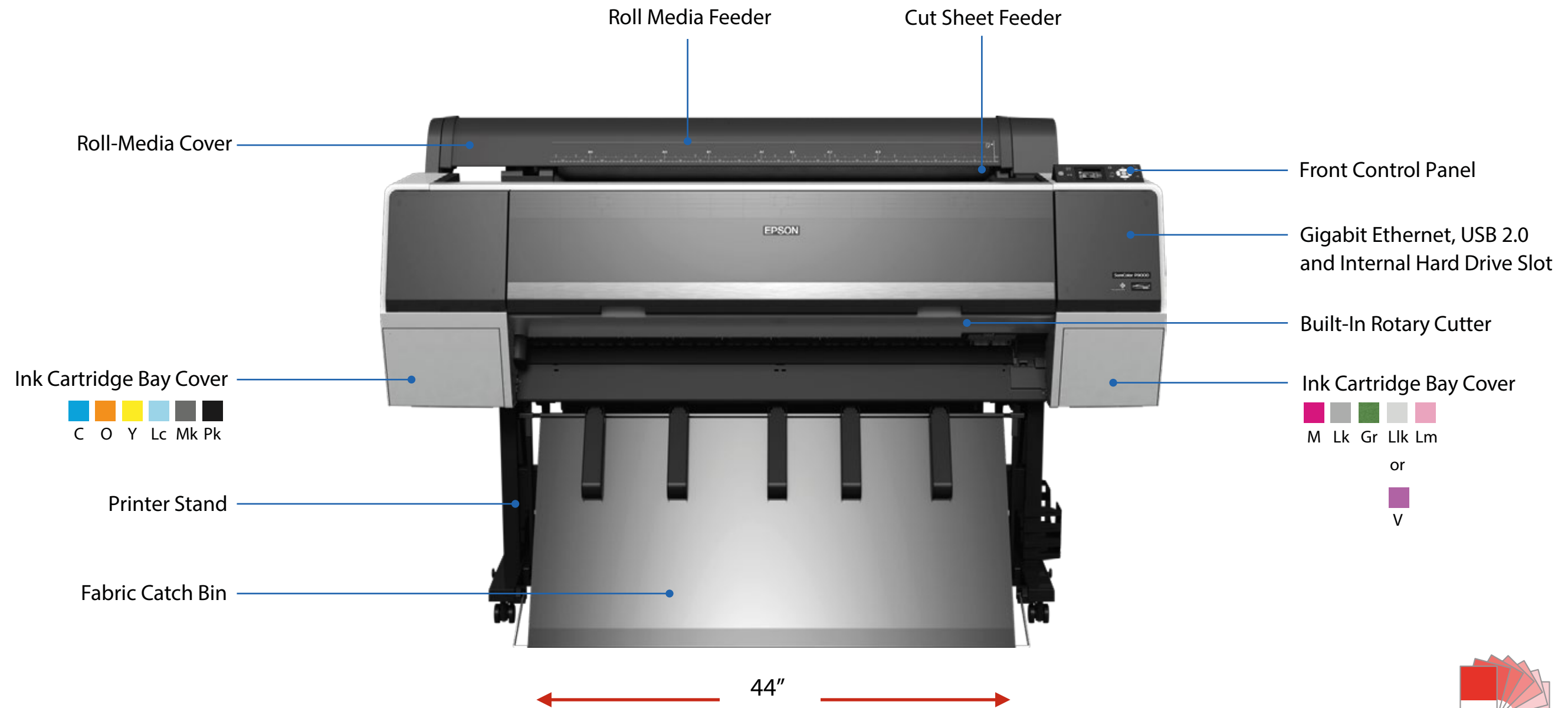
- **New Epson UltraChrome[®] HDX 10-Color Pigment Ink**
 - Outstanding color gamut
 - Optional violet ink for commercial proofing applications
 - Superior black density
 - Better print permanence
 - These printers are designed for use with Epson cartridges only, not third-party cartridges or ink¹
- **Latest Printhead Technology**
 - Epson PrecisionCore[®] TFP[®]
- **More Powerful Controller Board**
 - System On Chip (SOC) for faster processing and networking performance
- **New Workflow Features**
 - Optional internal 320 GB Print Server
 - Improved Epson SpectroProofer spectrophotometer option for automated color calibration and proof verification workflows



Epson SureColor P7000
53.4"(W) x 26.3"(D) x 48"(H) | 187 lb.



Epson SureColor P9000
73.4"(W) x 26.3"(D) x 48"(H) | 256 lb.





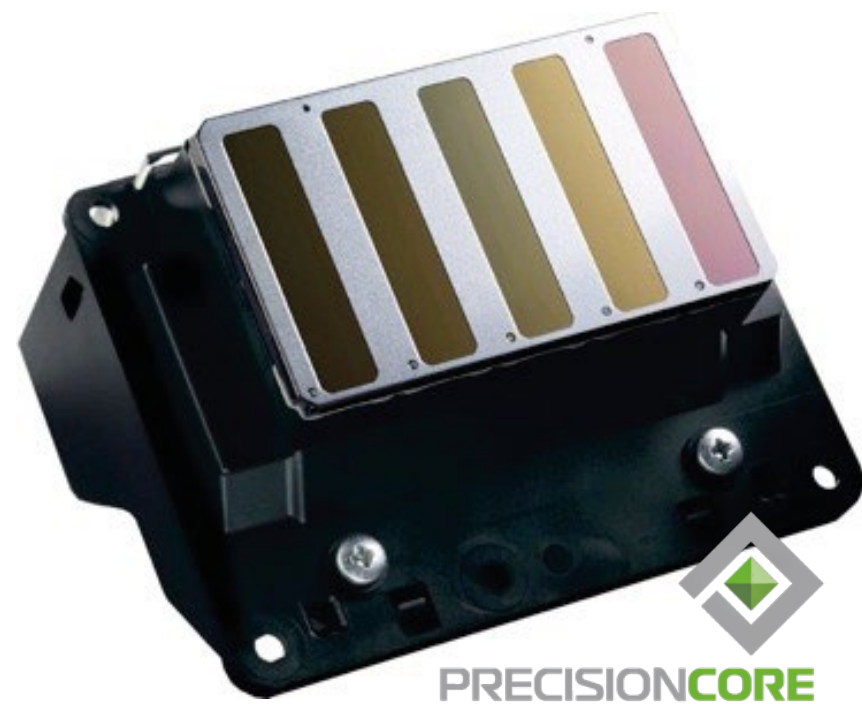


Ink Cartridge Capacities
150 ml | 350 ml | 700 ml

- **Next-Generation 10-Color Pigment Ink Technology**
 - All new pigments for outstanding color performance
 - Improved Resin Encapsulation Technology for superior gloss uniformity
- **Dramatically Improved Color Gamut**
 - New optional Violet Ink helps to achieve 99% of the Pantone Color Match System
 - Ability to faithfully reproduce important brand and spot colors
- **Improved Black Density**
 - Black pigments are 1.5 times denser than previous generation ink set
 - Significant improvement to overall contrast ratio and optical clarity
- **Significant Print Permanence Improvements**
 - New UltraChrome HDX ink set is currently under testing

	1	2	3	4	5	6	7	8	9	10	SW
Epson UltraChrome HDX Standard Edition Configuration	C	M	Y	K	LC	LM	LK	LLK	O	G	MK
Epson UltraChrome HDX Commercial Edition Configuration	C	M	Y	K	LC	LM	LK	V	O	G	MK

Due to the removal of the extra LLK ink, the UltraChrome HDX Commercial Edition Configuration is not intended for photo applications.



■ Unique Photographic Print head Technology

- Precise piezo-based print head, 10-channels with 360 nozzles per inch
- New ink repellent surface coating for reduced nozzle clogging

■ High Resolution Printing

- Capable of printing up to 2,880 x 1,440 dpi
- Supports variable sized droplet technology as small as 3.5 picoliter

■ Auto Black Ink Type Switching

- Automatic or user-prompted Photo to Matte Black ink switching

■ New User Scheduled Print Head Maintenance Cycles

- Improved print head health over prolonged idle periods
- User-selectable cleaning routines to occur periodically every 6 to 60 hours

	16" x 20" (Centered on 17" x 22")	20" x 30" (Centered on 24" x 34")	40" x 60" (Centered on 44" x 64 ")
720 x 720 HS	2:36	4:55	15:24
1440 x 720 HS	4:16	7:36	24:20
2880 x 1440 HS	6:58	12:25	40:05

Print times are based upon start of print head movement over the page to drop ink – Stop time based on printhead moving to park position

Test Images printed on Epson Premium Luster Photo Paper (260) using a standard ICC color managed workflow via Adobe®Photoshop®

HS = High-Speed Mode (Bi-Directional Print Mode)

Print speeds are shown in min:sec

- **Top-Loading Roll Media Support up to 24" and 44" Wide**
 - Supports most photographic and design media types
 - Spindle-Free media adapters with both 2" and 3" media core adjustments
- **Accurate Roll Media Length Tracking**
 - Automatic printing and reading of bar code to accurately estimate remaining length
 - Automatically alerts operator if there's not enough media left to print the job
- **BorderFree Printing for Many Popular Print Widths**
 - 10", 13", 16", 17", 24", 36" and 44" (36" and 44" available on SC-P9000)
- **Built-in Automatic Rotary Media Cutter**
 - Capable of smoothly cutting all photographic and fine art media types
- **Optional 44" Auto Take-up Reel System**
 - Perfect for unattended roll-to-roll production – SureColor P9000 only



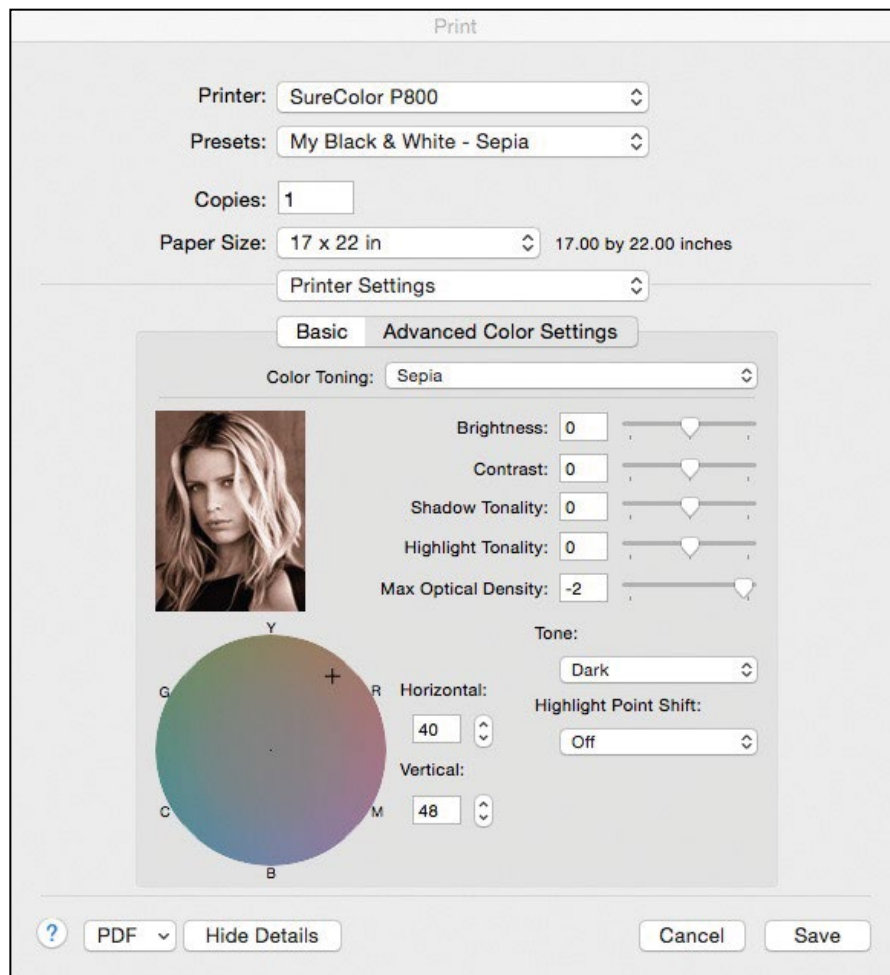


■ Unique Epson Designed Angled Media Path

- Simple and accurate loading of cut sheet media from Letter up to 24" or 44" wide
- Allows for a straight-through media path without requiring space behind the printer
- Provides for a safe media feeding path for the most delicate paper types

■ Single-Sheet Top-Loading Fine Art & Poster Board Media Input

- Simple top-loading for fine art and poster board media up to 1.5 mm thick
- Automatic alignment and paper skew checking
- Considered the benchmark standard for professional cut sheet media loading



Advanced Black & White Driver Dialog
Complete Control of Grayscale Toning

Apple Macintosh OS 10.10.4 Shown

■ Professional Photographic Drivers

- True 16-bit compatible drivers
- Apple® OS X 10.7 or higher
- Microsoft® Windows® 7, 8 and 10 (32-bit & 64-bit)

■ Unique EPSON PrecisionDot™ Screening

- Advanced form of math to determine dot size and placement
- Fixed and three-level variable-sized droplet technology for outstanding print quality
- Accurate blends and tonal transitions

■ Advanced Black & White Printing Technology

- Unique screening algorithm for producing professional black & white prints
- Utilizes our three-level black system to optimize black & white print quality
- Some of the world's greatest black and white prints have been produced using this driver technology

The Advanced Black and White Mode is not available with the Proofing Ink Configuration.

■ Internal 320 GB Print Server

- User installable option
- Can be quickly removed and stored for added security
- Quickly off-loads print data from multiple workstations simultaneously
- Advanced security with IPsec and IEEE802.1x authentication protocols

■ Internal 320 GB Print Server

- Manage jobs at the printer control panel, or remotely via a built-in web interface

■ New Printer Driver Options

- Print & Save – fast spooling with reprint functionality
- Print Only – fast spooling without job storage
- Save Only – holds jobs for printing at a later time
- Print after Transmission Completed – perfect for wireless and slow connections



Optional Internal Print Server
User Installable



X-Rite ILS30EP

SureColor P7000 Shown with
Optional Epson SpectroProofer 24

■ Epson SpectroProofer UVS

- Optional 24- or 44-inch wide spectrophotometer developed jointly by X-Rite
- Simple installation; fits cleanly into the front of the printer
- Supports both UV-cut and non UV-cut
- Both black and white interchangeable backing plates included
- Built-in print dryer to accelerate the dry-down and reading process
- Supported by industry leading workflows: AGFA, CGS, EFI, Fuji, GMG

■ New X-Rite ILS30EP Reading Unit

- Illuminate support for M0, M1 and M2, meets all standards
- XRG compliant for intra-device measurement consistency
- Capable of measurement accuracy below 0.2 dE94
- Available stand-alone as an upgrade to first generation SpectroProofer

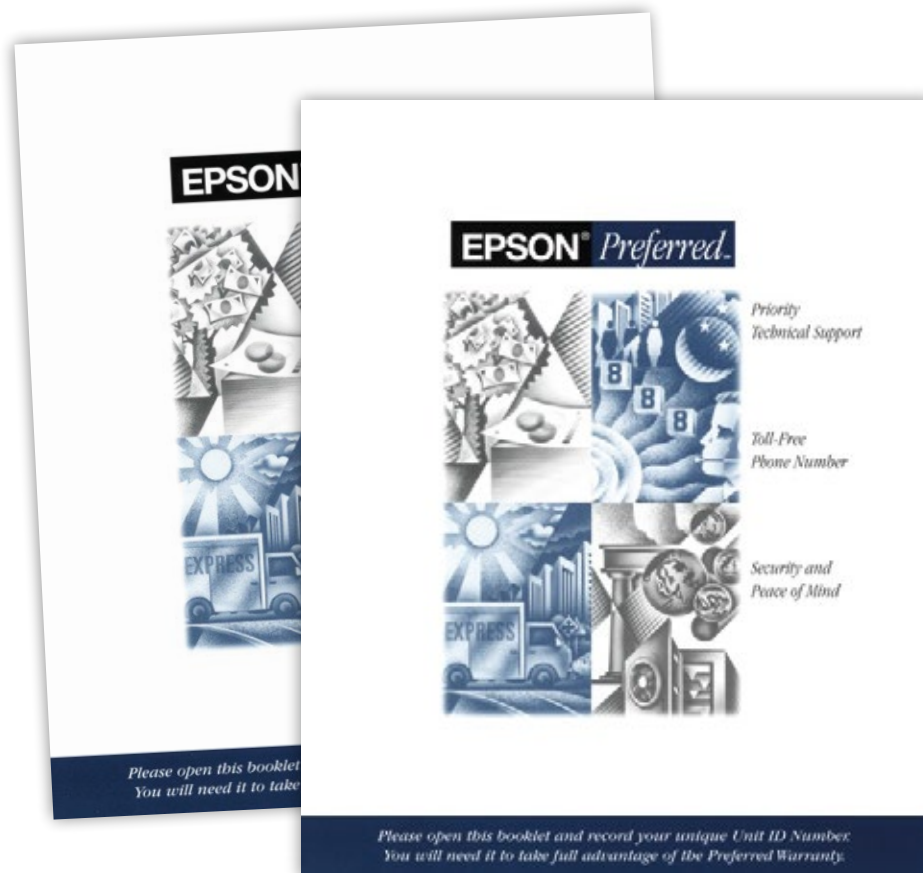
■ Standard 1-Year Epson Preferred SM Limited Warranty

- Free technical support Monday thru Friday
- If required, free full unit replacement - includes free shipping
- Covers the printer, genuine Epson optional accessories, and software

■ Optional 1- or 2-Year Epson Preferred Plus Premium Service and Support Plans

- Extends same Epson coverage when the standard limited warranty ends
- Can be purchased at any time while still under an Epson Preferred Limited Warranty
- Provides up to 3-years of complete coverage from Epson

Limitations apply. See service program for details.





■ Superior Print Quality

- Considered the benchmark standard for photographic, proofing, and design imaging

■ Epson UltraChrome HDX Ink Technology

- Outstanding color gamut, black density, and print permanence
- Proofing Configuration (violet ink) for 99% Pantone Spot color matching

■ Epson PrecisionCore TFP Print Head

- Unique imaging technology for superior print performance

■ Robust Media Handling

- Accurate handling of both roll and cut sheet media up to 24" and 44" wide
- Epson utilizes a unique angled straight-through media path for cut sheet media

■ World Class Service and Support

- Epson is considered to have the best warranty and service programs in the industry
- Supported by leading 3rd party software workflows

